

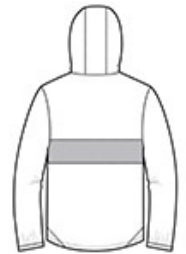


A zippered pocket keeps valuables accessible and secure in this element-beating anorak.

- 100% polyester shell
- 100% polyester mesh body and hood lining
- 100% polyester woven sleeve lining
- Tag-free label
- Three-panel hood with drawcord and toggles
- Angled chin guard for additional comfort
- Exposed Vislon zipper
- Stretch binding at cuffs
- Left side seam zipper for easy on/off
- Two pockets in one: front pocket includes a top zippered pocket to secure valuables
- Slight drop tail hem
- Drawcord hem with toggles



front



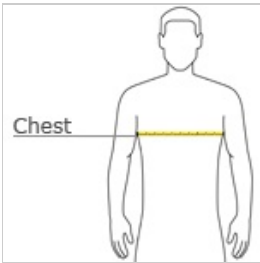
back

CARE INSTRUCTIONS

Machine wash cold. Gentle cycle with like colors. Use mild detergent and remove immediately. Do not allow to lay on itself when wet. Do not bleach. Tumble dry low. Cool iron, if needed.

[Tips For Effectively Screen Printing Polyester Fabrics](#)

HOW TO MEASURE



CHEST
With arms down at sides, measure around the upper body, under arms and over the fullest part of the chest.

SIZE CHART

	XS	S	M	L	XL	2XL	3XL	4XL
Chest	32-34	35-37	38-40	41-43	44-46	47-49	50-53	54-57

COLOR INFORMATION

Black/ Black PMS NTR Black	Black/ True Red CPMS NTR Black	Black/ True CRoyal PMS NTR Black	Graphite Grey/ Black CPMS 7540 C	True Navy/ White PMS 533 C